

# Vixtera Business Primer

Vixtera is developing the IIoT edge software and delivering automated solutions to industrial Enterprises, Manufacturers and VARs aimed to accelerate and simplify IIoT deployment and operation. We empower it with multifaceted professional services to customize and productize the solution. The ready-made software framework (ViEdge) is **powered by patented technologies** helping to accelerate asset management and decision making, expand operational visibility and reduce the cost to automate infrastructure and operation.



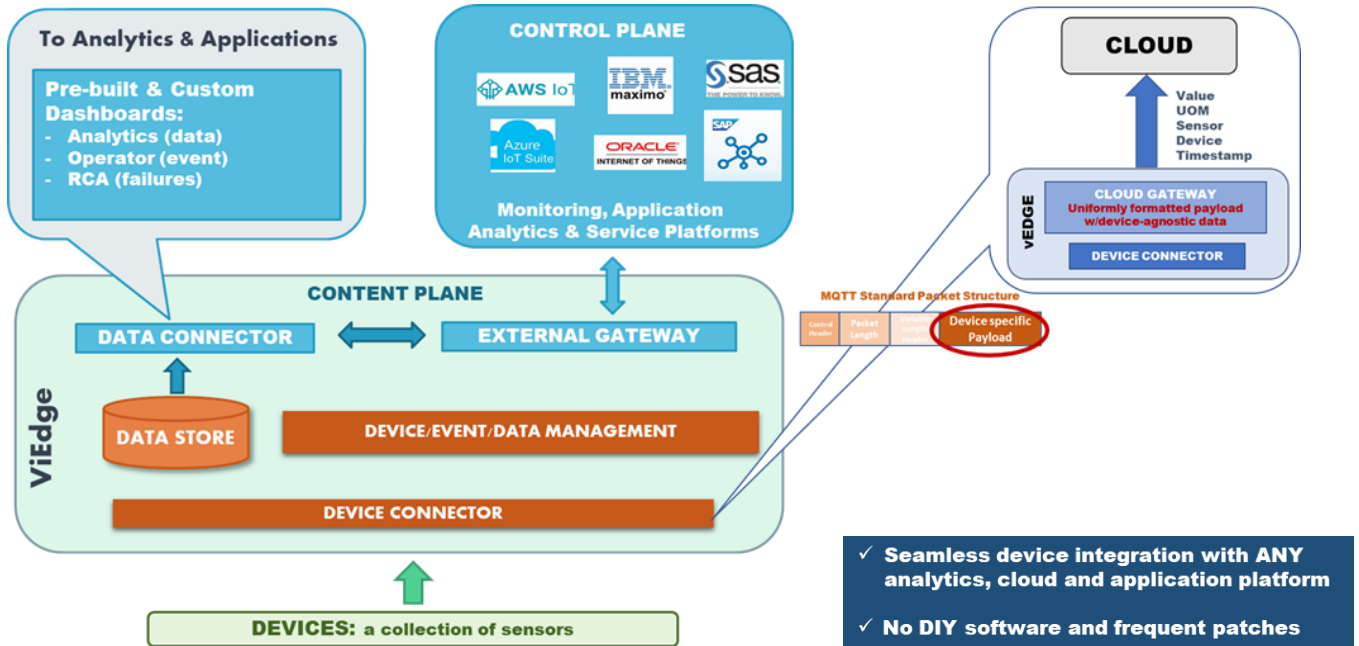
## Unique Value Proposition & Patented Technologies

- **Ubiquitous Connectivity and comprehensive device management**  
A patented declarative protocol delivering high velocity of device on-boarding and maintenance across ANY communication protocol or device brand/type. No drivers, SDK or DIY software is required.
- **Instant failure detection and prevention in plurality of connected ecosystem**  
A patented algorithm helping to promptly identify the root cause and a chain of events that's leading to a problem setting out the opportunity for speedy failure detection and prevention of potential breakdowns.
- **Auto-generation of AI/ML labeling reducing cost and complexity of predictive services**  
A patented technique to strengthen trustworthy predictive analysis utilizing source of failure (and chain of events that's leading to a problem) as a reliable label (and patterns) for NN training and AI/DL modeling.
- **Multifaceted data curation instantly yielding meaningful information to the outcome-based applications**  
A progressive methodology for instant event data collection, processing, and analysis at the edge. Eliminates duplication of metadata whereas reducing frequency and size of transmitted data; contextualizes and aggregates relevant event data providing reliable and timely insight.
- **Application enablement delivering quick and resolute actions**  
A descriptive mechanism for instant extraction, aggregation, and classification of meaningful event and data at the edge. A "drag-n-drop" query builder for rapid delivery of custom analytics. A seamless connector to external analytics platforms, cloud and services.

# Vixtera Business Primer

## Seamless Integration with Clouds and Applications

The ViEdge is architected as an intelligent connector, a gateway - a synergetic content plane framework to ANY control plane-based analytics, cloud and application platform. It facilitates cohesive physical to logical connectivity, including composing of uniformly formatted MQTT payload, unifying OT and IT across single data plane and overcomes burdens of integrating disparate devices, applications and data-driven services. The ViEdge workflow engine rapidly collects, processes and analyzes the data and seamlessly feeds the relevant, aggregated and contextualized data streams to external platforms without needs for frequent patches, additional software and endless integration.



## Vixtera Value Offerings

- \* Ready-made software framework (ViEdge)
- \* Ease of onboarding, maintenance and management
- \* Comprehensive data governance, including data curation
- \* Real-time visibility, failure detection and prevention
- \* Seamless device-to-cloud/application integration
- \* Highly skilled Professional Services

## Target Verticals

- \* Industrial Automation
- \* Electrical/Electronic Engineering
- \* Mechanical & Industrial Engineering
- \* Mining & Construction Industries
- \* Power Utilities

## Target Segments

- \* Enterprises
- \* Manufacturers
- \* Value-Added Resellers (VARs)
- \* System Integrators
- \* Data Centers

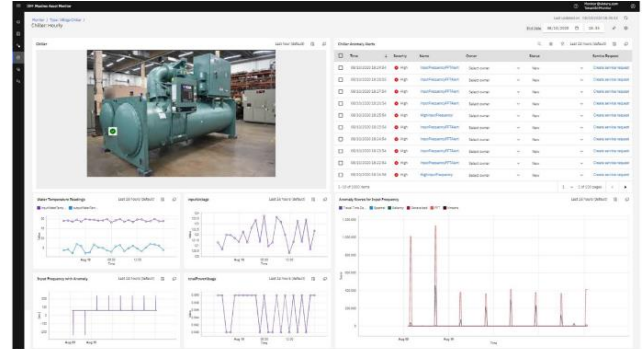
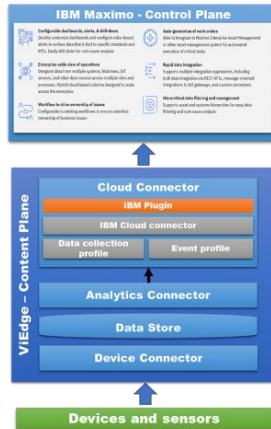


# Vixtera Business Primer

## USE CASE #1: Food-processing Enterprise

### BENEFITS

- \* Continued operation
- \* Eliminated breakdowns and costly repairs
- \* Improved cost-efficiency

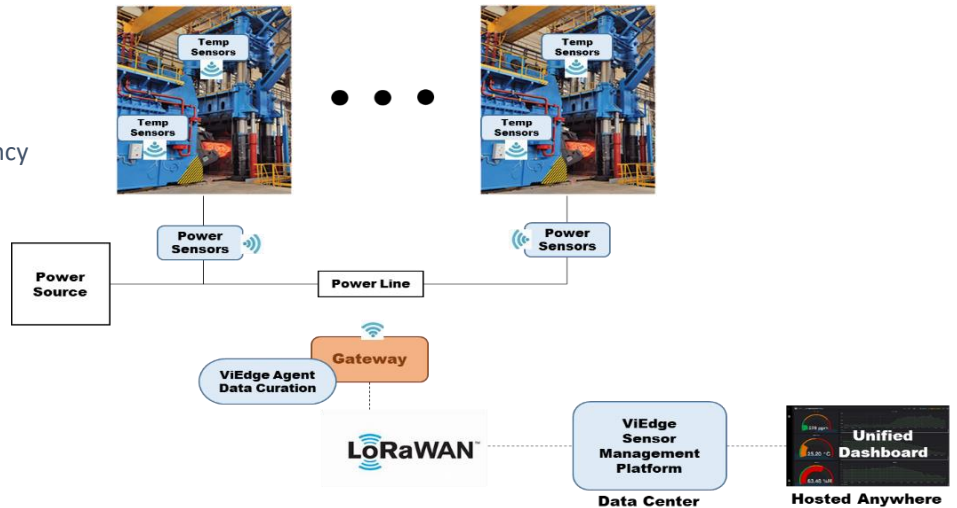


- ✓ **READY-MADE**
- ✓ **PLUG-N-PLAY**

## USE CASE #2: Large press-forging Manufacturer

### BENEFITS

- \* Improved visibility & control
- \* Reduced operation downtime
- \* Reduced maintenance cost
- \* Improved productivity & efficiency



## USE CASE #3: Large stamping production Manufacturer

### BENEFITS

- \* Automated supply chain processes
- \* +40% time-to-market
- \* +70% forecasting accuracy
- \* -40% in machine downtime
- \* -30% in cost of inventory holding
- \* +50% in productivity

